

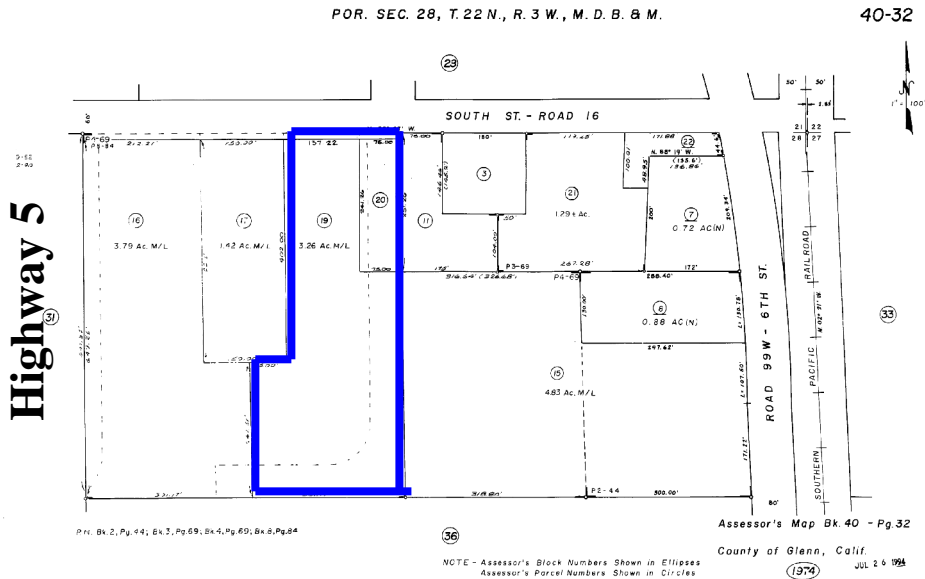


# CHICO OAKS REALTY

PHILADELPHIA SQUARE  
10 DECLARATION DR., SUITE E  
CHICO, CALIFORNIA 95973

## Hwy 5 Property For Sale Orland, CA.

Land Lease \* Build to Suit



### 3.5 Acres-\$599,000.00

Property is located on the East side of Highway 5 in Orland off the South Street off ramp. Orland is experiencing substantial growth over the last 2 years. Adjacent 3+ acres recently developed as 16,000 SF business park. Zoning is PD, which allows general commercial uses subject to approval of city.

**Seller will carry 30% down or will consider exchange**

**Call  
Bruce Roe  
Broker**

The information contained herein has been obtained from sources we deem reliable. We cannot, however, assume responsibility for its accuracy.  
For more properties, visit our web-site at: [chicooaksrealty.com](http://chicooaksrealty.com)

COMMERCIAL DEVELOPMENT • COMMERCIAL MANAGEMENT • INVESTMENT COUSELING • EXCHANGE COUNSELING

OFFICE (530)896-1941

RESIDENCE (530)893-5919

FAX (530)896-1933

This document was created with Win2PDF available at <http://www.win2pdf.com>.  
The unregistered version of Win2PDF is for evaluation or non-commercial use only.